

For more information visit [NorthridgeEnfield.com.au](http://NorthridgeEnfield.com.au)

**Northridge**  
ENFIELD



**Fairland Group Pty Ltd** 21-24 North Terrace, Adelaide SA 5000. PO Box 187, Hindmarsh SA 5007  
Ph: 08 8112 3133 Fax: 08 8221 5510 [fairland.com.au](http://fairland.com.au) RLA 274625

Details correct at time of publishing. All information subject to the approval from the City of Port Adelaide Enfield Council. Development plan shown is for indicative purposes only, please refer to final plans held by council. Fairmont Homes Builder's Licence No:188013 FNO12030

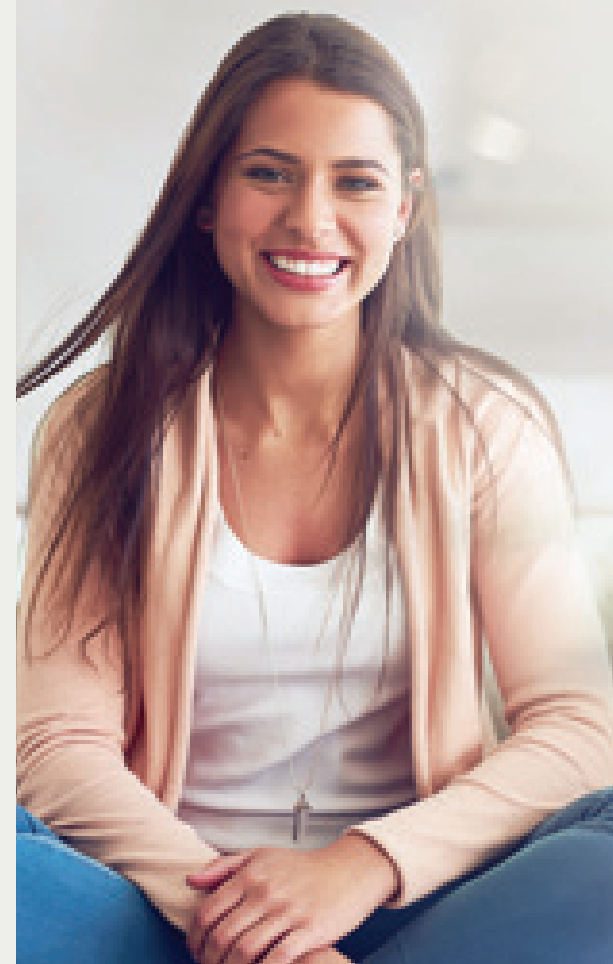


Located only 20 minutes from the Adelaide CBD, Northridge is an exciting new land release in the heart of Adelaide's northern suburbs.

Prime real estate comprising of over 170 allotments ranging in size from 129m<sup>2</sup> - 597m<sup>2</sup>.

Northridge is an exclusive new master-planned community at Enfield. This is a fantastic location and ideal for those wanting the advantages of living close to the city in an established suburb offering a great lifestyle.

- Only 13 km from Adelaide CBD and close to all amenities, facilities and services.
- The suburb of Enfield is well serviced by schools, sporting clubs, medical centres, childcare facilities and public transport.
- Close to Gepps Cross Homemaker Centre and a number of other major shopping precincts.
- Just a 10 minute drive to restaurants and cafes along O'Connell Street in North Adelaide and only a 10 minute walk to the Coopers Alehouse.
- Sports fields, reserves, parks and other venues offering outdoor pursuits all within easy reach.



# dream big

**It's affordable at Fairmont.**

**SA's Best House & Land Packages available with Fairmont Homes.**

Fairmont Homes are unbeatable when it comes to value for money. See their diverse range of House and Land Packages to suit all lifestyles and budgets.

Visit [NorthridgeEnfield.com.au](http://NorthridgeEnfield.com.au) or call Fairland on 8112 3133.

**Fairmont**Homes

[fairmonthomes.com.au](http://fairmonthomes.com.au)